



# DATA DRIVEN RESULTS

Align (online) training with your  
organisational goals

**ELITE LMS**  
[www.elite.co.za](http://www.elite.co.za)

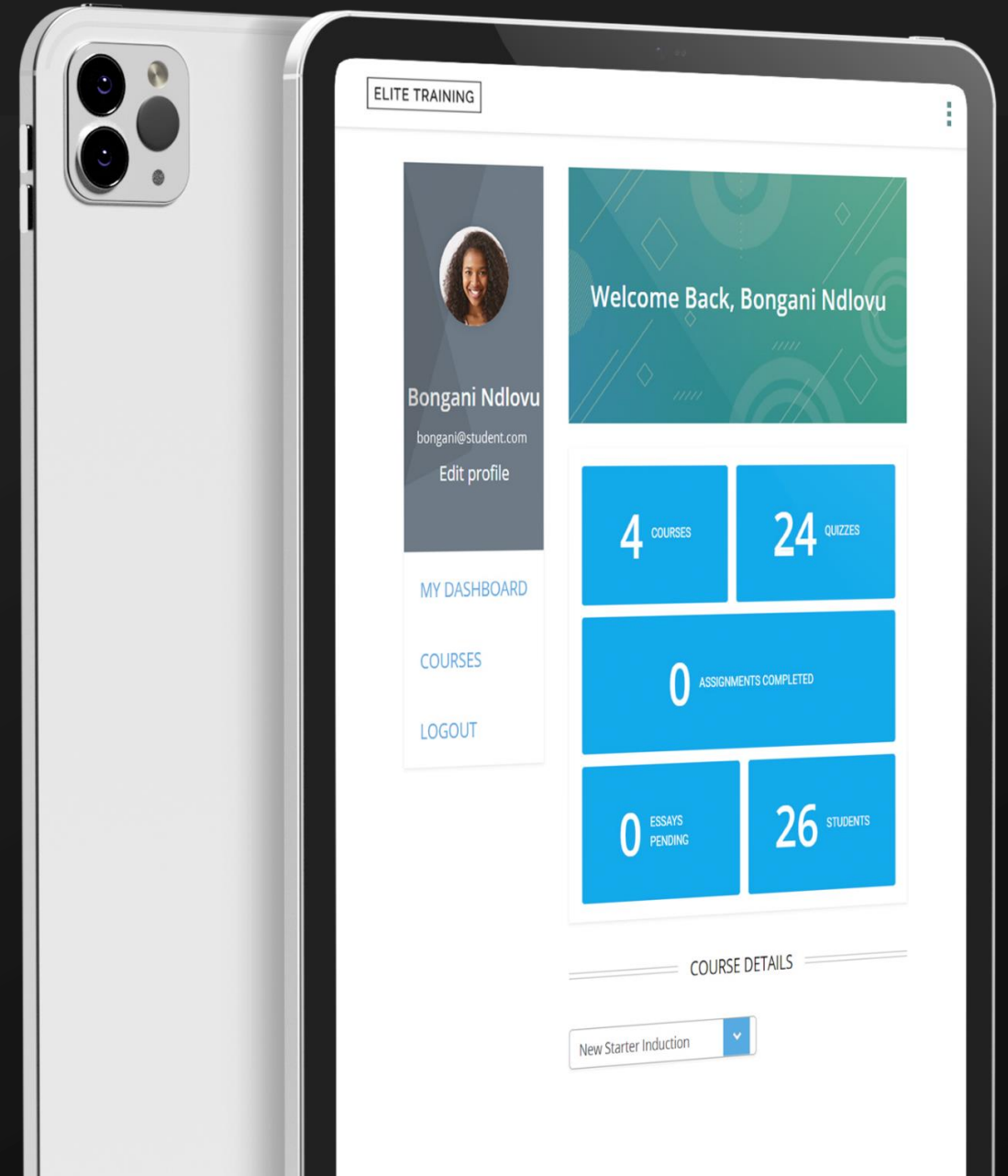
Learn, Manage and Measure

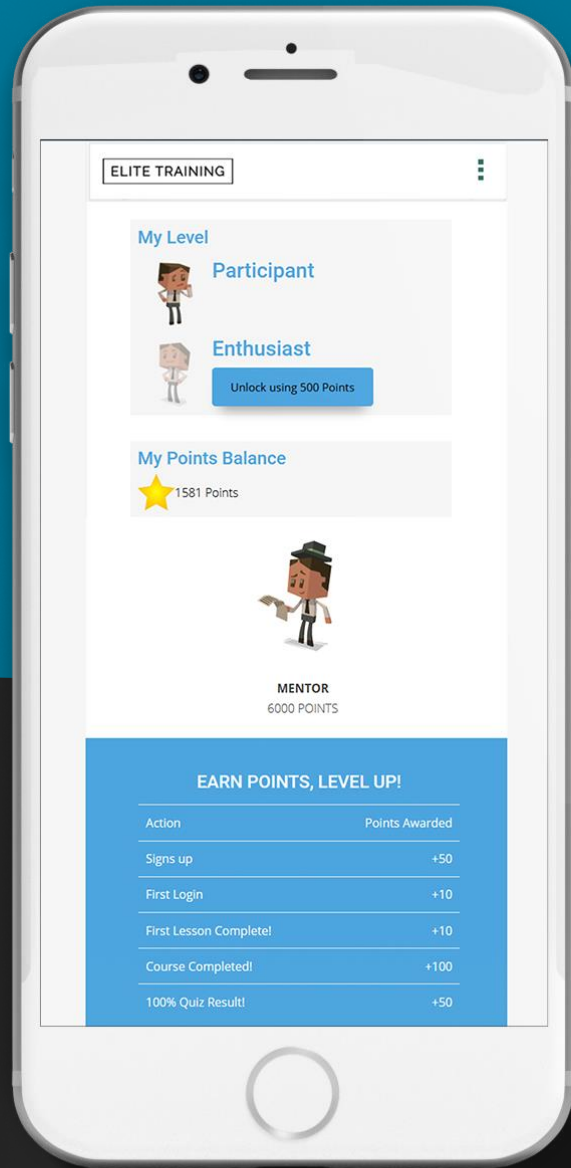
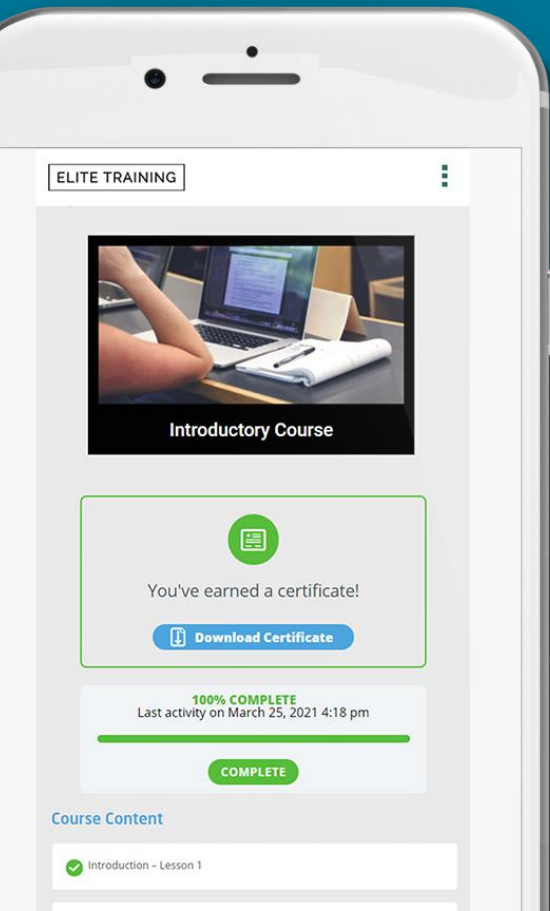
# Reporting

TAILORED LEARNING MANAGEMENT SOLUTIONS

## Easy Access from any Device

- Course Content Delivery
- Online Courses
- Student Registration and Administration
- Training Event Management
- Training Record Management





# What is an LMS

A learning management system (LMS) is a software application for the management, documentation, tracking, reporting and delivery of e-learning education courses or training programs.

A learning management system (LMS) allows you to create, distribute and track training anywhere, on any device.



## Simple

Manage your LMS with ease.



## Smart

Save time and administrative overheads

# WHY DO YOU NEED A LEARNING MANAGEMENT SYSTEM?



## Simplify Training Administration

The right learning management system can streamline this administrative effort by helping administrators to manage the classrooms, instructors, equipment & other resources needed to deliver courses. By automating many repetitive manual tasks, training administrators can focus on more strategic activities, such as assessing training effectiveness and measuring results.



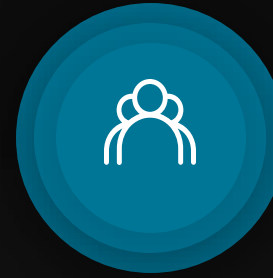
## Manage Regulatory Requirements

Another top benefit of an LMS is to ensure compliance with the various regulatory requirements that may apply to your industry or organisation. An LMS ensures consistent delivery of mandated training, along with consistent assessment of a student's comprehension of the material. An LMS can also track certification renewal dates. Automated tracking & notifications ensure that employees are keeping up with mandatory training and reducing the organisation's liability risk.



## Save Time and Money

An LMS can cut the costs associated with delivering training in several ways, such as through the efficiencies gained by streamlining administrative processes. Travel, hard-copy course materials, instructor pay, and time lost away from work are eliminated.



## Improve Employee Retention

There is significant evidence to support the fact that engaged and valued employees stay with an organization longer. An LMS allows organisations to create development plans and provide a clear path for career advancement. Associated learning activities make it possible for employees to expand their knowledge & skills to achieve their career goals.

# Easy Access & Management From Any Device

We make training management simple and intuitive.  
A Simple to use, Affordable, Scalable Training Software



Online  
Content  
Delivery

Gamification

Student  
Registration &  
Administration

Training Event  
Management

Training Record  
Management

Reporting

Certificate of  
Completion

Cloud Based

Courseware  
Authoring

e-Commerce  
Functionality

# What do you get with a Learning Management System?



## The Data You Need

- Instant insight into your training programs
- Visual dashboard with at-a-glance summaries
- Filter reports by courses, students, groups and status
- Easily export data to CSV



## Team Based Reporting

Grant dashboard access to your Team leaders. When they log into their account, they will see only the activity and data associated with the groups that they manage.



## Pre-Built Course Library

We have an extensive library of up to date soft skill courses for you to browse and select the ones you need.



## Customised, Branded LMS

We brand your LMS with your logo, images and company colours, and host your LMS on a server with your chosen domain name.



## Automation

Automated notifications, feedback forms, assessments, quizzes and certificate issue.



WHAT DO YOU GET WITH A

## LEARNING MANAGEMENT SYSTEM?



### Manage training paths, user groups and teams

Create multiple training paths to deliver personalized training to your teams. Organise your company's users by department or groups. Need to communicate something to the group? We made it easy by including a group email feature.



### Role Management

Create basic users with a student level, course creators with instructor level, account managers with administrator level. Give your group leaders access to course management and reporting. All user types can be assigned courses.



### Web-based LMS. Available anywhere, 24/7

Our LMS's are fully hosted on the web, no software needed. Connect your partners, customers, employees or students in a on-demand e-learning system that is automatically updated with new features and backed up to the cloud.



### E-commerce LMS – Easily sell courses online

Grant dashboard access to your Team leaders. When they log into their account, they will see only the activity and data associated with the groups that they manage.





WHAT DO YOU GET WITH A

## LEARNING MANAGEMENT SYSTEM?



### Custom eLearning Course Development

We can create professionally designed, engaging and interactive e-learning courses to add to your LMS.



### Easy course creation and management

Easily create courses using your existing, purchased or newly created content. Content can include SCORM, videos, audio, Power Points, PDF, embedded Youtube and more.



### Cross platform and responsiveness

Access your LMS from any laptop, desktop, tablet or smartphone with a HTML5 enabled browser.





# Our Courses



## Multi-Tier Courses

Break up courses into lessons, topics, quizzes and categories.



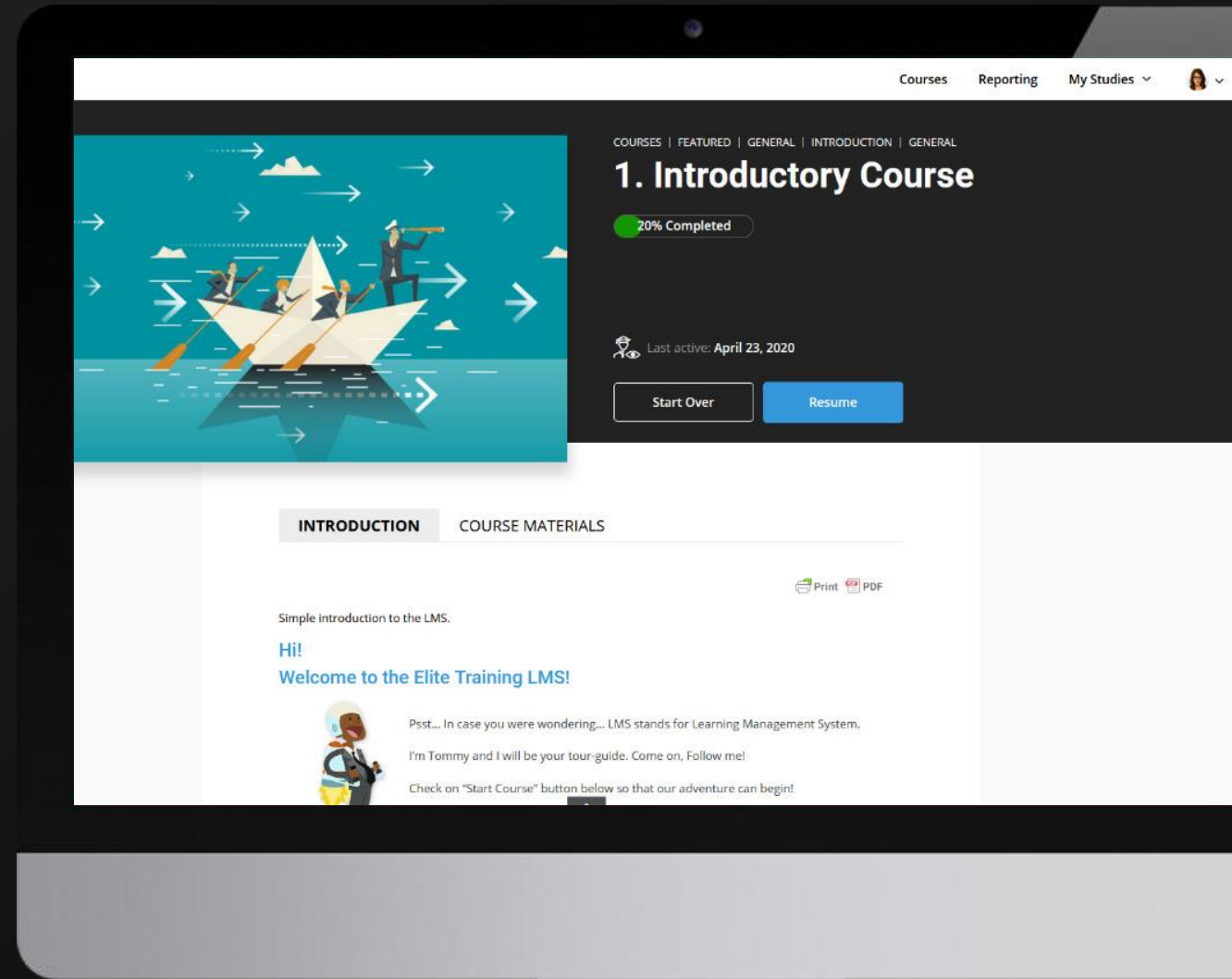
## Drip-Feed Content

Drip-feed your lesson content according to a schedule.



## Advanced Quizzing

Eight question types, custom messages, question banks.



# Our Courses

## Lesson Timers

Set a minimum amount of time that must be spent per lesson.



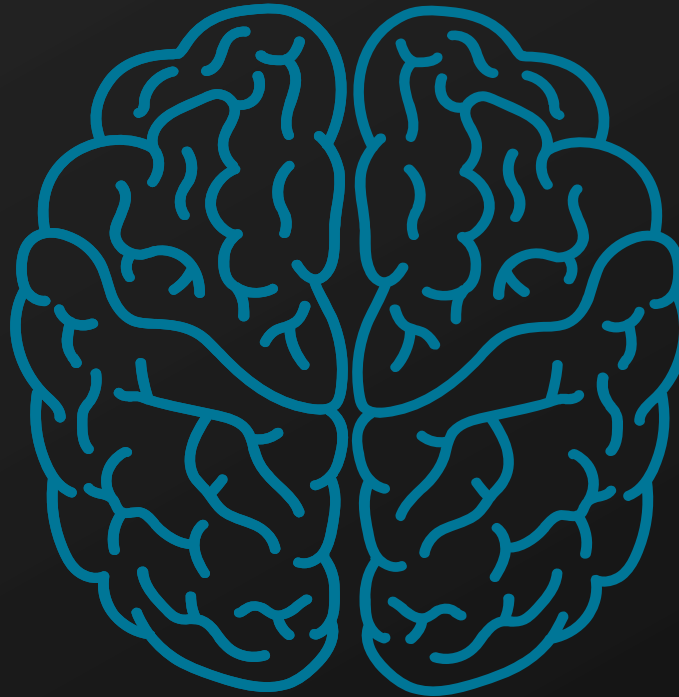
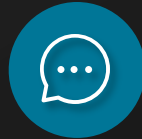
## Flexible Prerequisites

Set course, lesson and quiz based prerequisites.



## Dynamic Forums

Private or public course specific forums for your enrolled users.



## Gradebook

Award points for completing courses, as well as unlock new courses and achievements



## Course Points

Award points for completing courses and unlock new ones.



## Certificates & Badges

Award custom certificates and points for course activities.



# Blended Learning

Blended learning is an approach to education, combining online educational materials and opportunities with traditional place-based classroom methods.

However, when it comes to eLearning, the “place-based classroom methods” can be replaced by webinars, making the learning even more accessible and convenient.

Blended learning usually involves:

- A portion of the learning occurs online, with the student being able to manage the pace at which they learn.
- Another portion of the learning is instructor-led, usually conducted through webinars, allowing remote learners to engage more easily.
- Essentially, through blended learning, online and instructor-led training is complementary and creates an integrated learning environment.

Two key advantages to Blended Learning include:



**Reduces face-to-face training costs**



**Offers greater return on investment**

# GAMIFICATION

Reward your students for taking lessons, passing tests & getting perfect scores!

Incentivise students to do better by allowing them to show off their points, ranking and achievements on a leaderboard.

Make learning fun again by giving your students a visual reward and “pat on the back” for doing well.



## Achievements

Create an unlimited number of achievements that your students can earn.

These can be earned by the student for carrying out a wide range of interactions, such as: logging in, completing lessons and courses, passing quizzes and more.

Achievements can also be manually rewarded via the admin area.



## Course Badges

Encourage your learners with built in gamification - custom badge per course, badge image, badge score, badge title, points, quests and leadership boards to make learning more fun!



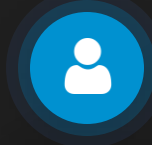
## Ranks

The ranks functionality allows you to create an unlimited number of ranks for your users to achieve.

These are achieved by the user meeting the minimum number of points or achievements required for each rank.



# LMS ADMINISTRATION



## User Profiles

Front-end profiles so users can track their course activity.



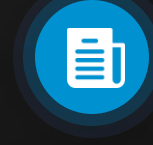
## Email Notifications

Automatic email with login details or when resetting passwords.



## Group Management

Place users into groups and allow others to manage them.



## Detailed Reporting

Quickly run reports on user enrollment, progress and quiz performance.



## Assignment Management

Approve, comment and award points on submitted assignments.



## Expire Access

Remove access after a specified amount of time.



## Automatic Registrations

Applications are automatically verified and approved, and a student login created.



## Quiz Marking

Quizzes are automatically graded as the student submits their answers.



## Certificate Issue

Certificates are automatically available when student completes course.

# E-commerce Option



01



## One-Time Purchase



One-time price, subscriptions & shopping cart supported.

02



## Subscriptions



Maximise revenue through recurring payments & subscriptions.

03



## Shopping Cart



Easily implement a shopping cart for selling courses.

04



## Membership



Sell membership access to all or some of your courses.

# E-commerce **Option**



## Course Bundles

One-time price, subscriptions and shopping cart supported.



## Event Management

Manage workshops and classroom training via events calendar



## Automated Checkout

From online shop to checkout and email notifications, everything is taken care of.



## Online Payments

Accept online payments instantly with Supported Payment Gateways.



## Event Tickets

Sell tickets to courses and workshops.



# Here are some of the companies that trust Elite LMS to manage their learning



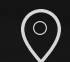


# Your Partner in Success

Contact Our Sales Team Today

 [www.elite.co.za](http://www.elite.co.za)

 [info@elite.co.za](mailto:info@elite.co.za)

 Pretoria, South Africa